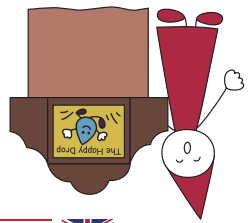


# Kamishibai

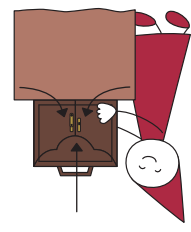
## Let's Perform



*Do not return the kamishibai to starting position, with sheet number 1 displayed.*

Close the doors of the stage deliberately, one by one

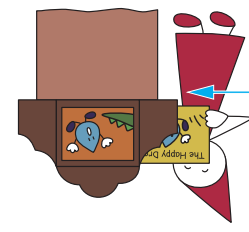
Take care at the end, giving time, stress to closing words, such as "The End"



### Ending

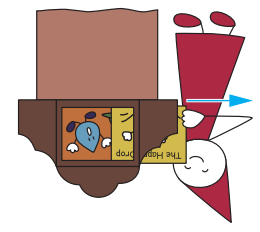
*Do not place finished scenes somewhere outside the stage or hold them in your hands. Put your heart into sliding out and inserting each picture.*

- Concentration on the next scene is fixed



### Sliding in the pictures

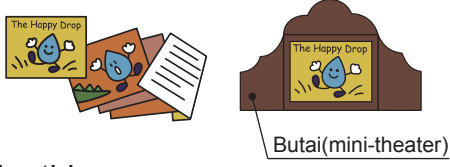
- The story expands into the real world  
 - Concentration on the next scene starts



### Sliding out the pictures

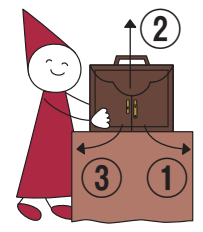
## What is Kamishibai

- Kamishibai is not bound
- Drawing on the front
  - Text on the back



- For this reason
- Performer faces audience to read the text
  - Perform by sliding the sheet out and sliding it back in
  - Butai(mini-theater) is necessary

## Opening



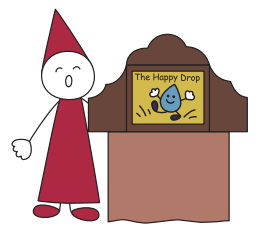
- Use the stage with three doors  
 Stand next to the stage
- Facing the audience, open the doors one by one
  - From ① to ②,③ or From ① to ③,②

## Beginning



- Stand beside the stage
- Not behind it
- Read the title and author's name
- Performer and audience anticipate communication

## Performance



- Read the story, making much of communication
- Perform using normal voice
- Do not alter your voice for different characters
- Do not change the content of the story. Focus instead on bringing out the world the author has created.*